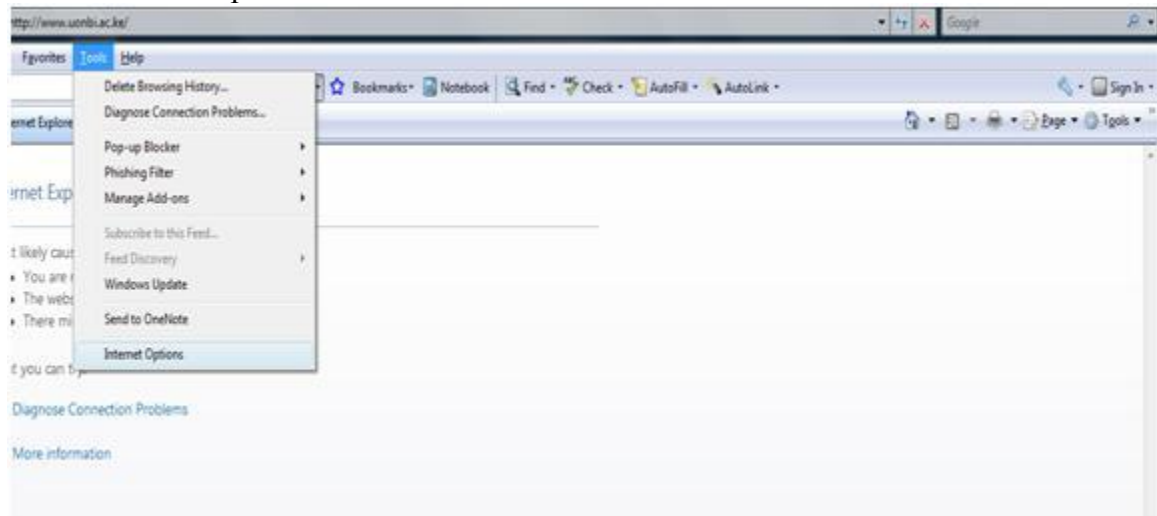


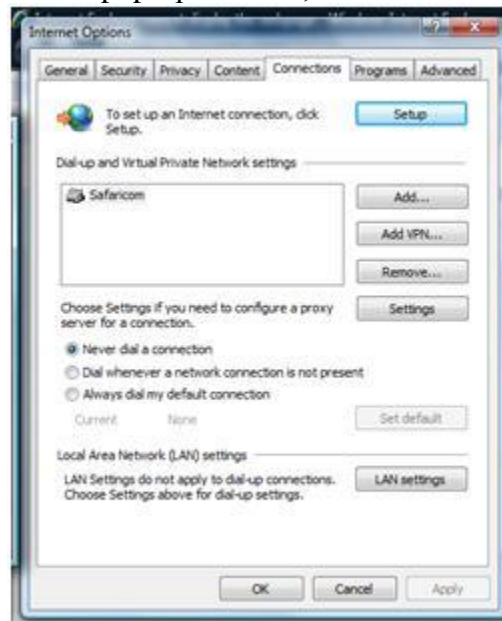
## Configuring Internet Explorer

1. Go to Tools → Options



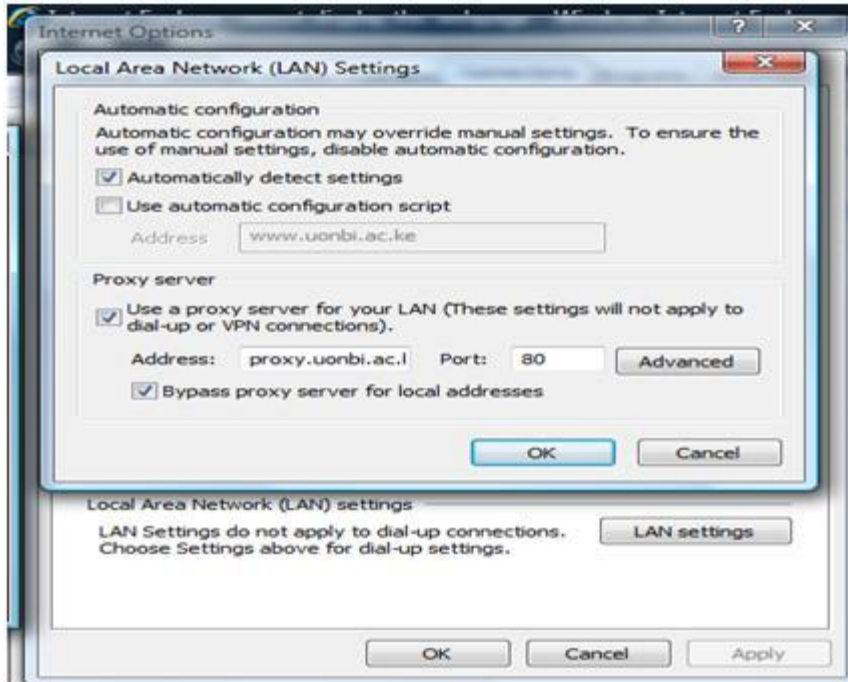
2.

3. On the pop-up window, click on Connections tab → LAN settings

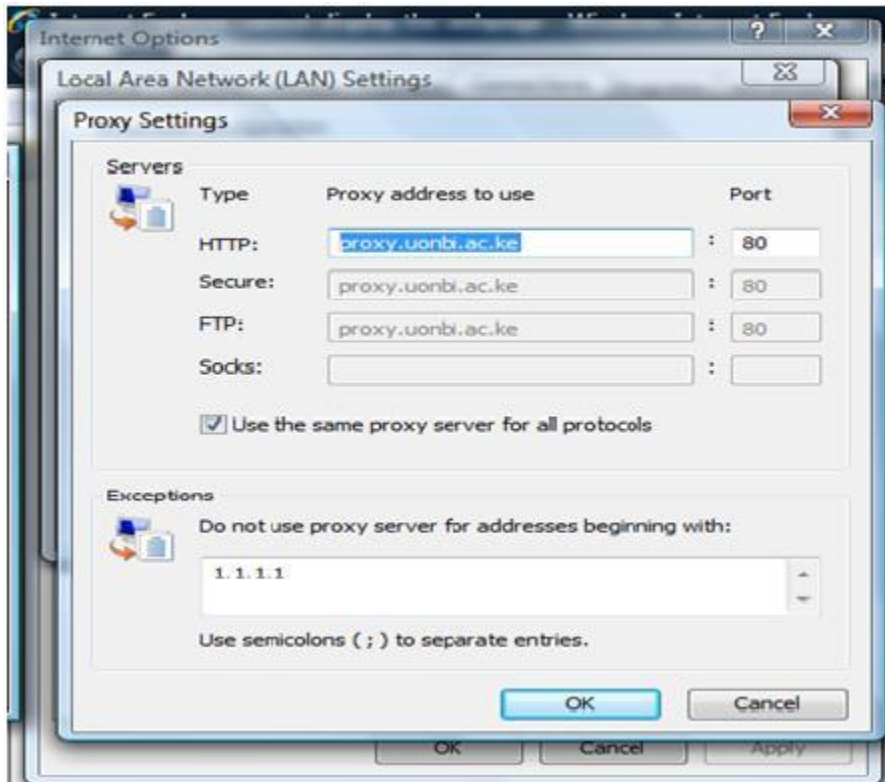


4.

5. On pop-up window, select *Use proxy server for your LAN ...*
6. Address ***proxy.uonbi.ac.ke*** port ***80***
7. Select *By pass proxy server for local addresses*



- 8.
9. Click on the Advanced Button



- 10.
11. Under Exceptions, enter 1.1.1.1
12. Click OK to save