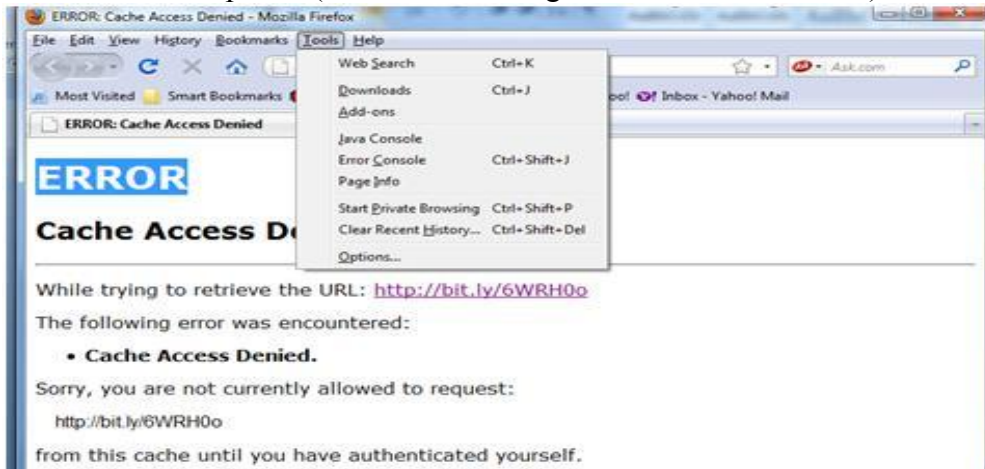
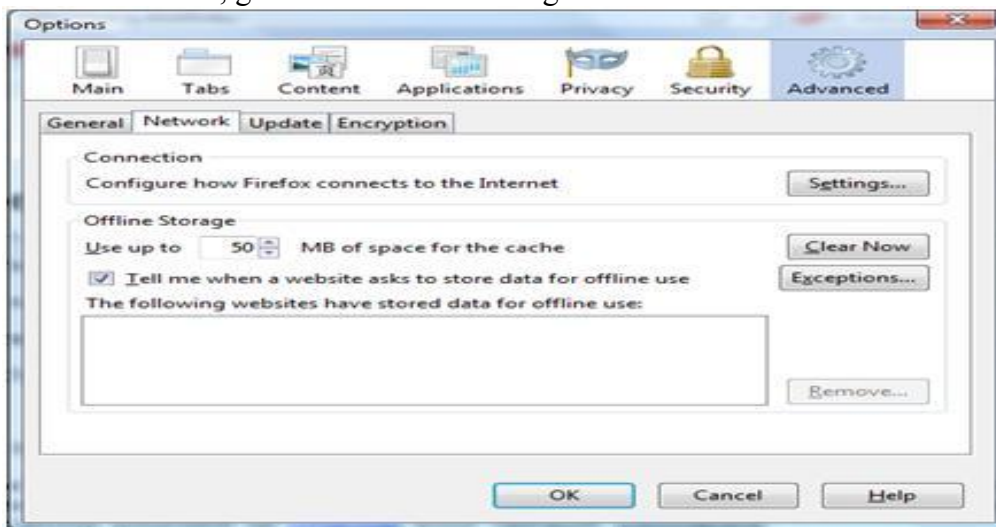


Configuring Mozilla Firefox

1. Go to Tools → Options (In other versions go to Edit → Preferences)



- 2.
3. On the pop-up window, click on Advanced tab
4. Under Advanced, go to Network → Settings



- 5.
6. On pop-up window, select *Manual Proxy Configuration*
7. Under HTTP proxy, type *proxy.uonbi.ac.ke* port *80*



8. Select *Use this proxy server for all protocols*
9. Under No Proxy for: Enter 1.1.1.1
10. Click OK to save